

GEORGE EDWIN EVERY, GUNNER 110684/ (TF)902138, RFA

Born on January 6 1885, George was the youngest son of James John Every and his wife Emma. James John was the builder of BSM Post Office, his initials – JJE – still displayed on a stone



Buckland St. Mary Post Office, about 1904. Mr. J.J. Every (Postmaster 1874-1929) and his wife are standing to the right of the picture. From a photograph in the possession of Mrs. L. Carroll. C3

in the wall of the shop. As the 1891 Census makes plain, he was not only the Sub Post Master, but a shoemaker (or cordwainer) and grocer too, as you can see from the shop window. In 1911 George was still living at home (his mother had since died), working as a Rural Postman.

In 1915 George was married, to Daisy Jenkins of Pontypool; their only child, Emma, was born in 1916.

We have a pre-war picture of him as a member of BSM cricket team, far right in the middle row.



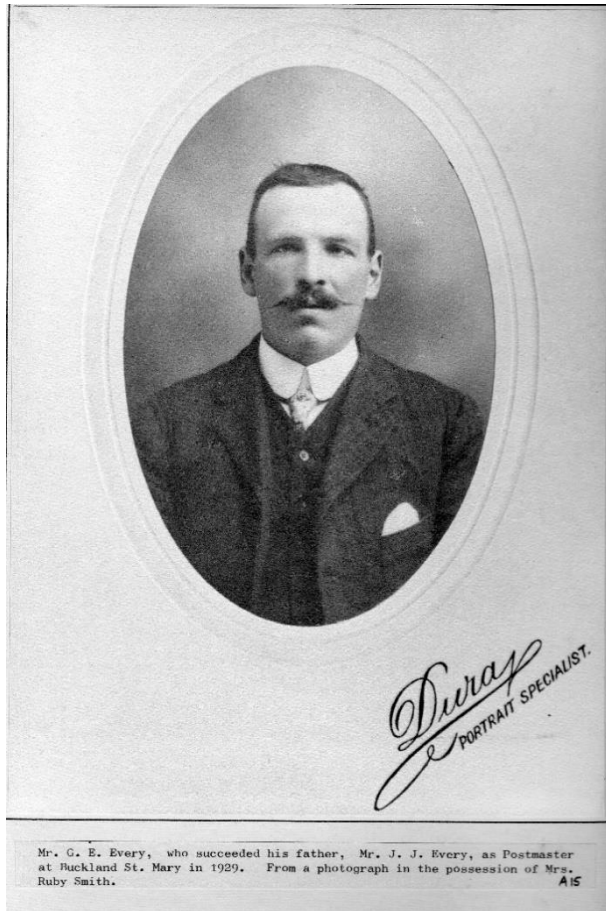
The Revd. Arthur Porcher Lance (Rector 1905-1926) and Buckland St. Mary cricket team, about 1910. Next to Rev. Lance is Sam Gready; standing next to the umpire Fred Grabham; seated in front of him George Every; and in front wearing pads H. Jeffery. From a photograph in the possession of Mrs. J. M. Colledge. A40

As George's Service Records don't survive we have no clear idea of when he joined up, but in a letter the Rector wrote to Sam Pym, dated November 29 1916, he says "Mr Every told me

this morning that George had been carrying stretchers at one of the clearing stations but that now he has been moved on somewhere else”. ‘TF’ in his Regimental number tells us that he had belonged, probably before the War, to the Territorial Force – a rough equivalent of the more recent Territorials. As the War went on they became absorbed into the regular force.

In the 1939 Register of England and Wales George and Daisy are still running the Post Office Shop, George described as Sub-Postmaster and Grocer.

He died in 1968 aged 83.



Mr. G. E. Every, who succeeded his father, Mr. J. J. Every, as Postmaster at Ruckland St. Mary in 1929. From a photograph in the possession of Mrs. Ruby Smith.

A15

Administrative County of Somerset

The undermentioned Houses are situate within the boundaries of the

Page 2

Civil Parish	No. of Houses	Urban Sanitary District	No. of Houses	Rural Sanitary District	No. of Houses	Parliamentary Borough or Division	No. of Houses	Electoralical Parish or District	No. of Houses																														
of <u>Buckland Mary</u>										of <u>Buckland Mary</u>	No. of Houses									of <u>Chard</u>	No. of Houses									of <u>Buckland Mary</u>	No. of Houses								
1	2	3	4	5	6	7	8	9	10	11	12	13	14	15	16	17	18	19	20	21	22	23	24	25	26	27	28	29	30	31	32	33	34	35	36	37	38		
No. of	ROAD, STREET, &c., and	HOUSES		NAME and Surname of		RELATION	CON-	AGR-	PER-	EMP-	WHER-	EMPL-	EMPL-	EMPL-	EMPL-	EMPL-	EMPL-	EMPL-	EMPL-	EMPL-	EMPL-	EMPL-	EMPL-	EMPL-	EMPL-	EMPL-	EMPL-	EMPL-	EMPL-	EMPL-	EMPL-	EMPL-	EMPL-	EMPL-	EMPL-	EMPL-	EMPL-	EMPL-	
Schedule	No. or NAME of HOUSE	(1)	(2)	(3)	(4)	(5)	(6)	(7)	(8)	(9)	(10)	(11)	(12)	(13)	(14)	(15)	(16)	(17)	(18)	(19)	(20)	(21)	(22)	(23)	(24)	(25)	(26)	(27)	(28)	(29)	(30)	(31)	(32)	(33)	(34)	(35)	(36)		
5	1 Church Lane	1	2	Samuel Hayes	Head	Wife	80	82	82	82	82	82	82	82	82	82	82	82	82	82	82	82	82	82	82	82	82	82	82	82	82	82	82	82	82	82	82	82	
6	2 do do	1	3	Mary Hayes	Head	Wife	82	82	82	82	82	82	82	82	82	82	82	82	82	82	82	82	82	82	82	82	82	82	82	82	82	82	82	82	82	82	82	82	
7	3 do do	1	3	Samuel Hayes	Head	Wife	80	82	82	82	82	82	82	82	82	82	82	82	82	82	82	82	82	82	82	82	82	82	82	82	82	82	82	82	82	82	82	82	
8	4 do do	1	3	Mary Hayes	Head	Wife	82	82	82	82	82	82	82	82	82	82	82	82	82	82	82	82	82	82	82	82	82	82	82	82	82	82	82	82	82	82	82	82	
9	5 do do	1	3	Samuel Hayes	Head	Wife	80	82	82	82	82	82	82	82	82	82	82	82	82	82	82	82	82	82	82	82	82	82	82	82	82	82	82	82	82	82	82	82	
10	6 do do	1	3	Mary Hayes	Head	Wife	82	82	82	82	82	82	82	82	82	82	82	82	82	82	82	82	82	82	82	82	82	82	82	82	82	82	82	82	82	82	82	82	
11	7 do do	1	3	Samuel Hayes	Head	Wife	80	82	82	82	82	82	82	82	82	82	82	82	82	82	82	82	82	82	82	82	82	82	82	82	82	82	82	82	82	82	82	82	
12	8 do do	1	3	Mary Hayes	Head	Wife	82	82	82	82	82	82	82	82	82	82	82	82	82	82	82	82	82	82	82	82	82	82	82	82	82	82	82	82	82	82	82	82	
13	9 do do	1	3	Samuel Hayes	Head	Wife	80	82	82	82	82	82	82	82	82	82	82	82	82	82	82	82	82	82	82	82	82	82	82	82	82	82	82	82	82	82	82	82	
14	10 do do	1	3	Mary Hayes	Head	Wife	82	82	82	82	82	82	82	82	82	82	82	82	82	82	82	82	82	82	82	82	82	82	82	82	82	82	82	82	82	82	82	82	
15	11 do do	1	3	Samuel Hayes	Head	Wife	80	82	82	82	82	82	82	82	82	82	82	82	82	82	82	82	82	82	82	82	82	82	82	82	82	82	82	82	82	82	82	82	
16	12 do do	1	3	Mary Hayes	Head	Wife	82	82	82	82	82	82	82	82	82	82	82	82	82	82	82	82	82	82	82	82	82	82	82	82	82	82	82	82	82	82	82	82	
17	13 do do	1	3	Samuel Hayes	Head	Wife	80	82	82	82	82	82	82	82	82	82	82	82	82	82	82	82	82	82	82	82	82	82	82	82	82	82	82	82	82	82	82	82	
18	14 do do	1	3	Mary Hayes	Head	Wife	82	82	82	82	82	82	82	82	82	82	82	82	82	82	82	82	82	82	82	82	82	82	82	82	82	82	82	82	82	82	82	82	
19	15 do do	1	3	Samuel Hayes	Head	Wife	80	82	82	82	82	82	82	82	82	82	82	82	82	82	82	82	82	82	82	82	82	82	82	82	82	82	82	82	82	82	82	82	
20	16 do do	1	3	Mary Hayes	Head	Wife	82	82	82	82	82	82	82	82	82	82	82	82	82	82	82	82	82	82	82	82	82	82	82	82	82	82	82	82	82	82	82	82	
21	17 do do	1	3	Samuel Hayes	Head	Wife	80	82	82	82	82	82	82	82	82	82	82	82	82	82	82	82	82	82	82	82	82	82	82	82	82	82	82	82	82	82	82	82	
22	18 do do	1	3	Mary Hayes	Head	Wife	82	82	82	82	82	82	82	82	82	82	82	82	82	82	82	82	82	82	82	82	82	82	82	82	82	82	82	82	82	82	82	82	
23	19 do do	1	3	Samuel Hayes	Head	Wife	80	82	82	82	82	82	82	82	82	82	82	82	82	82	82	82	82	82	82	82	82	82	82	82	82	82	82	82	82	82	82	82	
24	20 do do	1	3	Mary Hayes	Head	Wife	82	82	82	82	82	82	82	82	82	82	82	82	82	82	82	82	82	82	82	82	82	82	82	82	82	82	82	82	82	82	82	82	
25	21 do do	1	3	Samuel Hayes	Head	Wife	80	82	82	82	82	82	82	82	82	82	82	82	82	82	82	82	82	82	82	82	82	82	82	82	82	82	82	82	82	82	82	82	
26	22 do do	1	3	Mary Hayes	Head	Wife	82	82	82	82	82	82	82	82	82	82	82	82	82	82	82	82	82	82	82	82	82	82	82	82	82	82	82	82	82	82	82	82	
27	23 do do	1	3	Samuel Hayes	Head	Wife	80	82	82	82	82	82	82	82	82	82	82	82	82	82	82	82	82	82	82	82	82	82	82	82	82	82	82	82	82	82	82	82	
28	24 do do	1	3	Mary Hayes	Head	Wife	82	82	82	82	82	82	82	82	82	82	82	82	82	82	82	82	82	82	82	82	82	82	82	82	82	82	82	82	82	82	82	82	
29	25 do do	1	3	Samuel Hayes	Head	Wife	80	82	82	82	82	82	82	82	82	82	82	82	82	82	82	82	82	82	82	82	82	82	82	82	82	82	82	82	82	82	82	82	
30	26 do do	1	3	Mary Hayes	Head	Wife	82	82	82	82	82	82	82	82	82	82	82	82	82	82	82	82	82	82	82	82	82	82	82	82	82	82	82	82	82	82	82	82	
31	27 do do	1	3	Samuel Hayes	Head	Wife	80	82	82	82	82	82	82	82	82	82	82	82	82	82	82	82	82	82	82	82	82	82	82	82	82	82	82	82	82	82	82	82	
32	28 do do	1	3	Mary Hayes	Head	Wife	82	82	82	82	82	82	82	82	82	82	82	82	82	82	82	82	82	82	82	82	82	82	82	82	82	82	82	82	82	82	82	82	
33	29 do do	1	3	Samuel Hayes	Head	Wife	80	82	82	82	82	82	82	82	82	82	82	82	82	82	82	82	82	82	82	82	82	82	82	82	82	82	82	82	82	82	82	82	
34	30 do do	1	3	Mary Hayes	Head	Wife	82	82	82	82	82	82	82	82	82	82	82	82	82	82	82	82	82	82	82	82	82	82	82	82	82	82	82	82	82	82	82	82	
35	31 do do	1	3	Samuel Hayes	Head	Wife	80	82	82	82	82	82	82	82	82	82	82	82	82	82	82	82	82	82	82	82	82	82	82	82	82	82	82	82	82	82	82	82	
36	32 do do	1	3	Mary Hayes	Head	Wife	82	82	82	82	82	82	82	82	82	82	82	82	82	82	82	82	82	82	82	82	82	82	82	82	82	82	82	82	82	82	82	82	
37	33 do do	1	3	Samuel Hayes	Head	Wife	80	82	82	82	82	82	82	82	82	82	82	82	82	82	82	82	82	82	82	82	82	82	82	82	82	82	82	82	82	82	82	82	
38	34 do do	1	3	Mary Hayes	Head	Wife	82	82	82	82	82	82	82	82	82	82	82	82	82	82	82	82	82	82	82	82	82	82	82	82	82	82	82	82	82	82	82	82	
39	35 do do	1	3	Samuel Hayes	Head	Wife	80	82	82	82	82	82	82	82	82	82	82	82	82	82	82	82	82	82	82	82	82	82	82	82	82	82	82	82	82	82	82	82	
40	36 do do	1	3	Mary Hayes	Head	Wife	82	82	82	82	82	82	82	82	82	82	82	82	82	82	82	82	82	82	82	82	82	82	82	82	82	82	82	82	82	82	82	82	
41	37 do do	1	3	Samuel Hayes	Head	Wife	80	82	82	82	82	82	82	82	82	82	82	82	82	82	82	82	82	82	82	82	82	82	82	82	82	82	82	82	82	82	82	82	
42	38 do do	1	3	Mary Hayes	Head	Wife	82	82	82	82	82	82	82	82	82	82	82	82	82	82	82	82	82	82	82	82	82	82	82	82	82	82	82	82	82	82	82	82	
43	39 do do	1	3	Samuel Hayes	Head	Wife	80	82	82	82	82	82	82	82	82	82	82	82	82	82	82	82	82	82	82	82	82	82	82	82	82	82	8						

E.D. Letter Code *WPTG*

Borough, U.D. or R.D.

Chard, Som't R.D.

Registration District

and Sub-district

308/1

ADDRESS	SCHEDULE		SURNAME AND OTHER NAMES	O. V. S. P. or L.	M. or F.	BIRTH		S. M. W. or D.	PERSONAL OCCUPATION
	No.	Sub. No.				Day	Year		
1	2	3	4	5	6	7	8	9	10
<i>Post Office Buckland St Mary</i>	1.	1.	<i>Every George B.</i>	-	M.	6 Jan	85	M.	<i>Sub-postmaster, grocer</i>
		2.	<i>Every Daisy K.</i>	-	F.	30 June	81	M.	<i>Household duties</i>
<i>Laurel Cottage</i>	2.	1.	<i>Spiller, Henry G.</i>	-	M.	17 May	02	M.	<i>Gardener (at private house)</i>
		2.	<i>Spiller, Ivy A.</i>	-	F.	59 Mar	17	M.	<i>Unpaid Dom: Duties</i>
<i>Green Banks</i>	3.	1.	<i>Baines Alice S.</i>	-	F.	25 Aug	70	S.	<i>Head Teacher, Retired</i>
		2.	<i>Jaggard Florence K.</i>	-	F.	26 Aug	85	S.	<i>Teacher, Retired</i>
<i>4 Little Hill</i>	4.	3.	<i>Jaggard Emily</i>	-	F.	14 Apr	61	W.	<i>Private means</i>
		1.	<i>Porter George R.</i>	-	M.	1 Aug	96	M.	<i>allowance Petyer & P.</i>
		2.	<i>Porter, Lily</i>	-	F.	22 July	96	M.	<i>Unpaid Dom: Duties</i>

This record is officially closed.

4.	<i>Porter, William G.</i>	-	M.	14 Mar	27	S.	<i>at School</i>
5.	<i>Porter, Donald</i>	-	M.	7 Dec	28	S.	<i>at School</i>

This record is officially closed.

This record is officially closed.

This record is officially closed.

<i>3 Little Hill</i>	5	9.	<i>Lucas Elizabeth A.</i>	-	F.	12 July	76	W.	<i>Unpaid Dom: Duties</i>
		10.	<i>Lucas, Lilian C.</i>	-	F.	13 Jan	03	S.	<i>Laundry Receiving Office Manageress</i>
		11.	<i>Reeves Patricia M.</i>	-	F.	26 Sept	37	S.	<i>Under School Age</i>
		1.	<i>Hartnell William H.</i>	-	M.	17 Feb	95	M.	<i>Labourer: Public Works Contractors</i>
		2.	<i>Hartnell Harriet A.</i>	-	F.	6 Apr	96	M.	<i>Unpaid Dom: Duties</i>
		3.	<i>Hartnell William A.</i>	-	M.	4 Aug	19	S.	<i>Labourer: Public Works</i>

This record is officially closed.

5.	<i>Hartnell Ronald F.</i>	-	M.	29 Aug	25	S.	<i>House - boy</i>
----	---------------------------	---	----	--------	----	----	--------------------

This record is officially closed.

This record is officially closed.

This record is officially closed.

This record is officially closed.

<i>2 Little Hill</i>	6.	1.	<i>Hounsell Ernest</i>	-	M.	29 Apr	94	M.	<i>Under School Age</i>
		2.	<i>Hounsell Edith M.</i>	-	F.	30 Sep	01	M.	<i>Horseman on farm</i>

This record is officially closed.

This record is officially closed.

5.	<i>Hounsell Peter G.</i>	-	M.	19 Mar	29	S.	<i>at School</i>
----	--------------------------	---	----	--------	----	----	------------------

This record is officially closed.

This record is officially closed.

This record is officially closed.

<i>1 Little Hill</i>	7	9.	<i>Hounsell Veronica S.A.F.</i>	-	F.	28 Aug	38	S.	<i>Under School Age</i>
		1.	<i>Booper Vangalow</i>	-	M.	11 May	82	M.	<i>Labourer - general</i>
		2.	<i>Booper Mary</i>	-	F.	29 Nov	83	M.	<i>Unpaid Dom: Duties</i>
		3.	<i>Booper Briscilla</i>	-	F.	17 July	13	S.	<i>Unpaid Dom: Duties</i>
<i>Higher Bombsbury B.</i>	NR230	4.	<i>Booper Mary (Jr)</i>	-	F.	24 Dec	14	S.	<i>book - general</i>
		5.	<i>Booper Ivy</i>	-	F.	2 Feb	17	S.	<i>Daily Help</i>
		1.	<i>Matravers Fred</i>	-	M.	1 Feb	82	M.	<i>Farmer (smallholder) & mason</i>
		2.	<i>Matravers Bessie</i>	-	F.	20 Feb	84	M.	<i>Unpaid Dom: Duties</i>
		3.	<i>Matravers Percy</i>	-	M.	5 Jan	07	S.	<i>Farm labourer & mason assisting father</i>

See INSTRUCTIONS.

PWC 706/2407

PWC 706/2407
See page



The Revd. Arthur Porcher Lance (Rector 1905-1926) and Buckland St. Mary cricket team, about 1910. Next to Rev. Lance is Sam Gready; standing next to the umpire Fred Grabham; seated in front of him George Every; and in front wearing pads H. Jeffery. From a photograph in the possession of Mrs. J. M. Colledge.

A40



Buckland St. Mary Post Office, about 1904. Mr. J.J. Every (Postmaster 1874-1929) and his wife are standing to the right of the picture. From a photograph in the possession of Mrs. L. Carroll.

C3

Name.	Corps.	Rank.	Regtl. No.
EVERY.	R.F.A.	Gnr.	110684
			(TF) 902138.
George. E.			
Medal.	Roll.	Page.	Remarks.
VICTORY	R 59/339 B.	48012	
BRITISH			
STAR			
Theatre of War first served in			
Date of entry therein			

K. 1390

B. F. A.

REGIMENT OR CORPS.

ROLL OF INDIVIDUALS entitled to the Victory Medal and/or British War Medal granted under Army Orders 266 and 301.

of 19 . No: 48012, Supy.

Held by an individual in the Corps in respect of which the rolls are submitted.		NAME	In respect of what Corps previously served with by such individual and Regt. No. therein, if the highest rank, whether substantive, rating or temporary awarded as having been awarded for any period in a Theatre of War, and whether the individual being shown against the name of the regiment or Corps which is to be inserted on the award.	Theatre of war in which served	Clasp awarded (to be left blank)	Record of disposal of decorations		REMARKS
Regt. No.	Rank					(a) Presented	(b) Disposed by Post	(c) Taken into Stock
110330	Driver	SMITH, Frank.	R.F.A. 110330, Dvr. R.F.A. (TF) 971389.	NE				
110336	Owner	DRIVKk. Harry.	R.F.A. (TF) 780482. GWR.	NE				Leave Award 25/10/1919
110382	Driver	FLOYD, Leonard.	R.F.A. 110382, Dvr. R.F.A. (TF) 961098.	NE				
110631	Driver	FRAN. Thomas, George.	R.F.A. (TF) 260411. Dvr.	NE				
110684	Owner	EVERY, George, Edwin.	R.F.A. 110684, Sqr. R.F.A. (TF) 260103.	NE				

WOOLWICH

I certify that according to the Official Records the individuals named in this ROLL are entitled to the Medal or Medals as detailed above.

Place

28 -7-1920

Date _____

Signature and rank of Officer certifying